



Dayton Hotel

Steering Committee Meeting

27 July 2022

Project Overview



- Retain Reynolds Homestead (616 E Mifflin)
- Retain Warehouse Facade (615 E Dayton St)
- "Residential" Addition on E Mifflin St (Hotel Use)
- Public Cafe has been removed
- 3 Story Neighborhood Hotel
 - 1 Level of Underground Parking
 - 3 Levels of Wood Framed Hotel
- Building Specs
 - 55 Rooms / 25 Underground Parking Stalls

Project Timeline

Landmarks Commission - July 25th (Already Occurred)

Land Use Application Submittal - August 8th

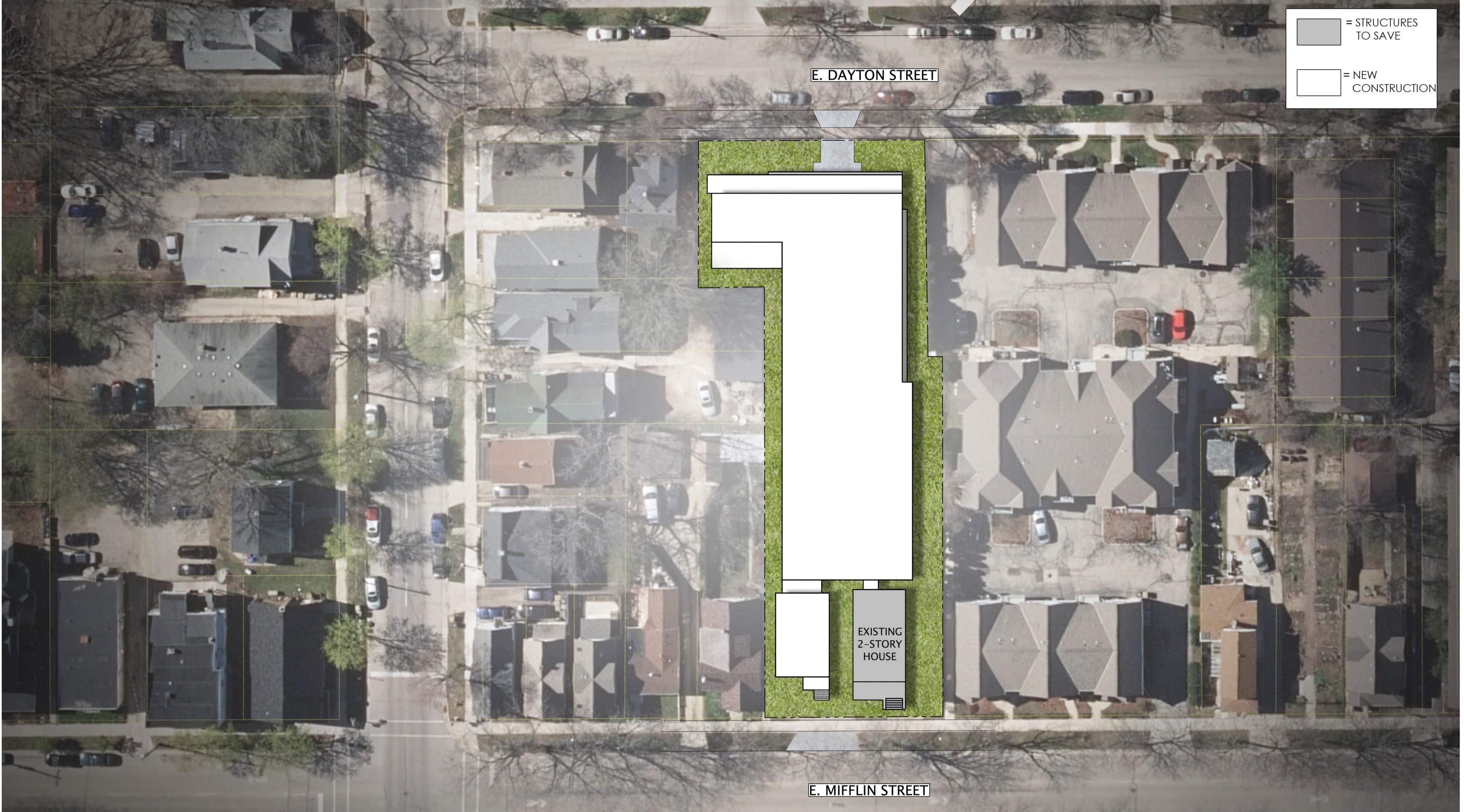
Plan Commission - September 19th

Common Council - September 20th (For CSM Approval)

Start Construction - Winter 2022

Project Completion - Winter 2023





JLA
ARCHITECTS

DAYTON MIFFLIN - HOTEL

SITE PLAN

JULY 22, 2022

1"=40' @ 11x17





NORTH ELEVATION - DAYTON
 3/32" = 1'-0"

McGRATH
 Property Group

7/22/2022 4:24:48 PM



DAYTON-MIFFLIN HOTEL

EXTERIOR ELEVATIONS

JLA PROJECT No:	21-1006
DATE OF ISSUANCE:	JULY 22, 2022
REVISION DATE:	

M-01



SOUTH ELEVATION - MIFFLIN
3/32" = 1'-0"

McGRATH
Property Group

7/22/2022 4:24:48 PM



JLA

ARCHITECTS

MADISON : MILWAUKEE

jla-ap.com

DAYTON-MIFFLIN HOTEL

EXTERIOR ELEVATIONS

JLA PROJECT No:	21-1006
DATE OF ISSUANCE:	JULY 22, 2022
REVISION DATE:	

M-02



JLA
ARCHITECTS



JLA
ARCHITECTS



JLA
ARCHITECTS



JLA
ARCHITECTS